

EDUCATION

University of Washington Life Sciences Building, Seattle, WA, USA

Canolfan S4C Yr Egin University of Wales, Carmarthen, UK

University of Kansas Medical Center Health Education Building, Kansas City, KS, USA

Graafschap College, Doetinchem, Netherlands

Alfred R. Goldstein Library, Ringling College of Art and Design, Sarasota, FL, USA

Georges Frêche High School, Montpellier, France

Elson S. Floyd Cultural Center, Washington State University, Pullman, WA, USA

Nelson Mandela High School, Pibrac, France

GRAAFSCHAP COLLEGE

Doetinchem, Netherlands



VISION

Taking inspiration from the surrounding trees, Graafschap College wanted a new and innovative type of building envelope design for 5,600m² of extensive sports facilities. A unique façade that would increase natural daylight and outside visibility, so as to enhance comfort and learning performance for students and staff alike.

TRANSFORMATION

To deliver a light and airy atmosphere throughout, this project brought together Kawneer's AA®100 & RT 72 Reflex curtain walls and doors, alongside block windows with hidden wings. Combining functionality and style, the finished result has established a bright, open educational environment dedicated to concentration and collaboration.

REALISATION

With a limited height and transparent façade featuring a rust-brown organic tree design, Graafschap College is a unique building that fits seamlessly into its environment and welcomes in lots of natural light. The thermal façade is highly insulating, while the weather-resistant metal construction helps to reduce the internal heat load.



Location: Doetinchem, Netherlands

Client: Polybouw

Architect: cepezed

Date: 2019

Products Used

AA®100 Curtain Wall

RT 72 Reflex*



PRODUCTS ONLY AVAILABLE IN EUROPE
AND *BENELUX AND GERMANY

Photographer

Dirk Verwoerd

RESIDENTIAL

Sluishuis, Amsterdam, Netherlands

Erie Basin, Manchester, UK

The Pearl, Silver Spring, MD, USA

Pontsteiger, Amsterdam, Netherlands

Left Bank, Birmingham, UK

Haut, Amsterdam, Netherlands

L'Arbre Blanc, Montpellier, France

Alexan on 8th, Atlanta, GA, USA

Lorentz Torens, Leiden, Netherlands

Arcadio Villa, Marbella, Spain

STATE Amsterdam, Amsterdam, Netherlands

St Albans Place, Leeds, UK

Havenlofts, Rotterdam, Netherlands

PONTSTEIGER

Amsterdam, Netherlands



VISION

Pontsteiger is an integral part of transforming the former lumber port of Houthaven into an aspirational neighbourhood. This spectacular residential building is an incredibly complex project, involving a 'bridge' constructed with four steel lattice trusses hung between two 90m high towers, emanating from the IJ river.

TRANSFORMATION

Customised RT 72 Reflex windows and doors were fitted to both the low-rise commercial plinth and prefab curtain wall of the high-rise section, enhancing thermal performance and protecting residents from high winds. This flexibility enabled each storey to be constructed within a single week.

REALISATION

The iconic cube design of Pontsteiger is heightened further by our systems, which make the most of the natural light and offer captivating views over the city, as well as towards the IJ river. It's hardly surprising that the project has already won a string of international building awards.

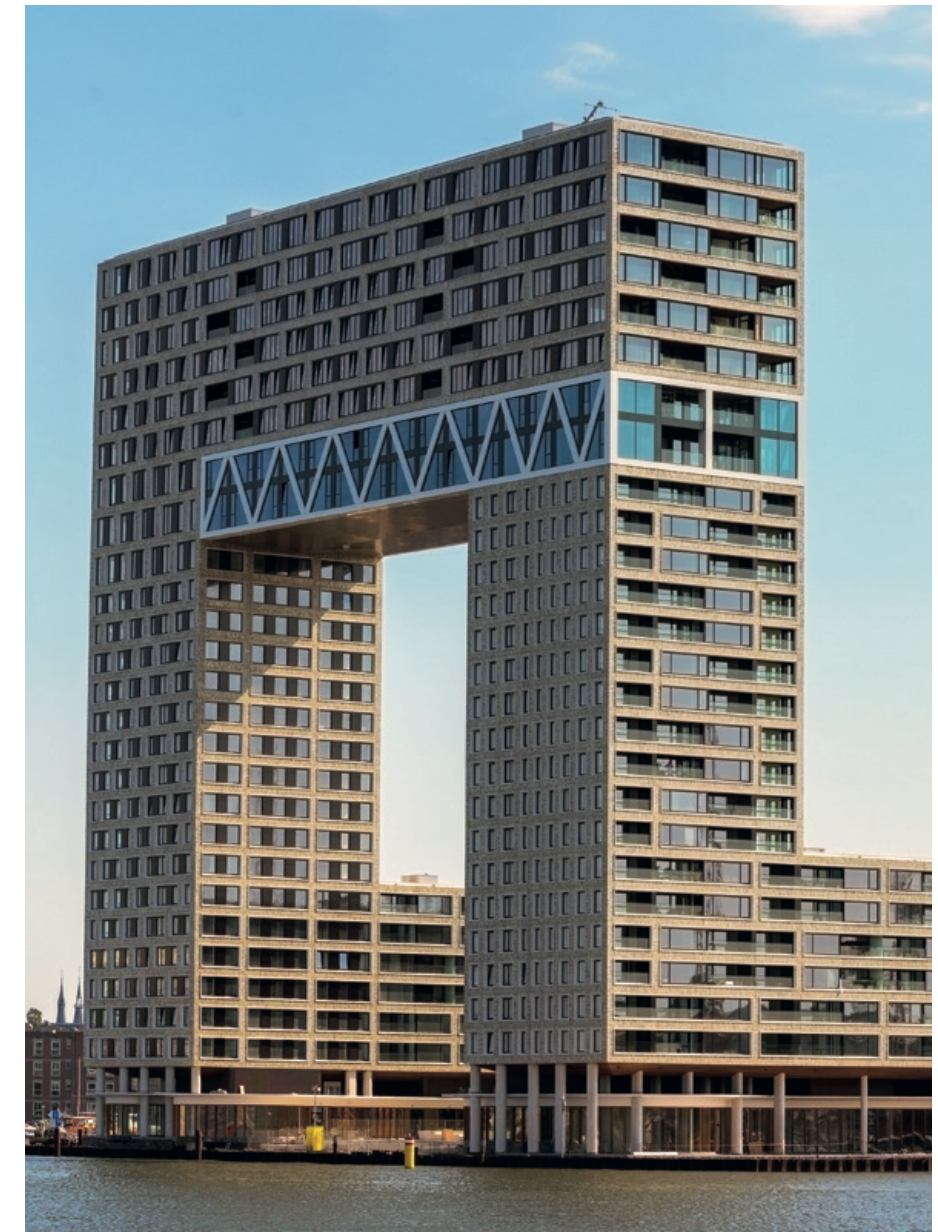


Products Used

RT 72 Reflex



PRODUCT ONLY AVAILABLE
IN BENELUX AND GERMANY



Location: Amsterdam, Netherlands

Client: Rollecate

Architect: Arons en Gelauff

Photographer

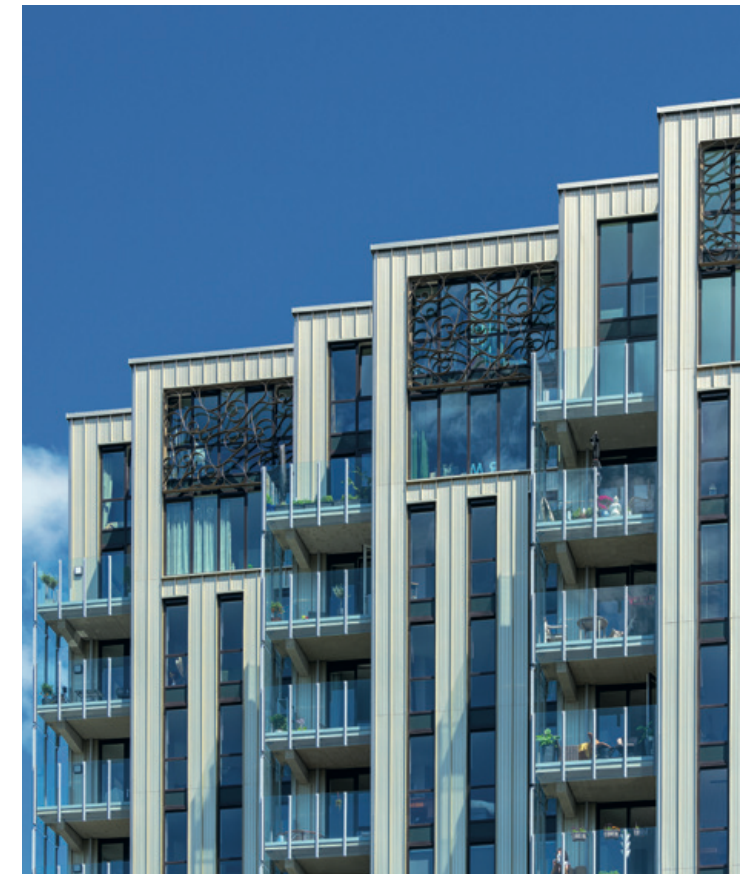
Dirk Verwoerd

LORENTZ TORENS

Leiden, Netherlands



Location: Leiden, Netherlands
Client: ASW
Architect: Neutelings Riedijk Architecten
Date: 2020



VISION

Located directly by Central Station, the multifunctional Lorentz Towers combine offices, shops and eateries with two robust residential towers. It provides an iconic new gateway to the cosmopolitan city of Leiden, welcoming some 70,000 visitors every day.

TRANSFORMATION

Two towers projecting from a striking dark plinth building called for a high-performance, flexible façade solution. The architects chose the proven capabilities of Kawneer's AA®100 Curtain Wall system and RT 72 Reflex doors and windows to meet the aesthetic and performance requirements of the high-profile design.

REALISATION

Redeveloping this urban gateway into an attractive, vibrant place to live, work and shop, the Lorentz Towers are part of an exciting large-scale municipal plan to transform the entire area over the next decade, connecting the station and historic centre of Leiden.

Products Used

AA®100 Curtain Wall
RT 72 Reflex*



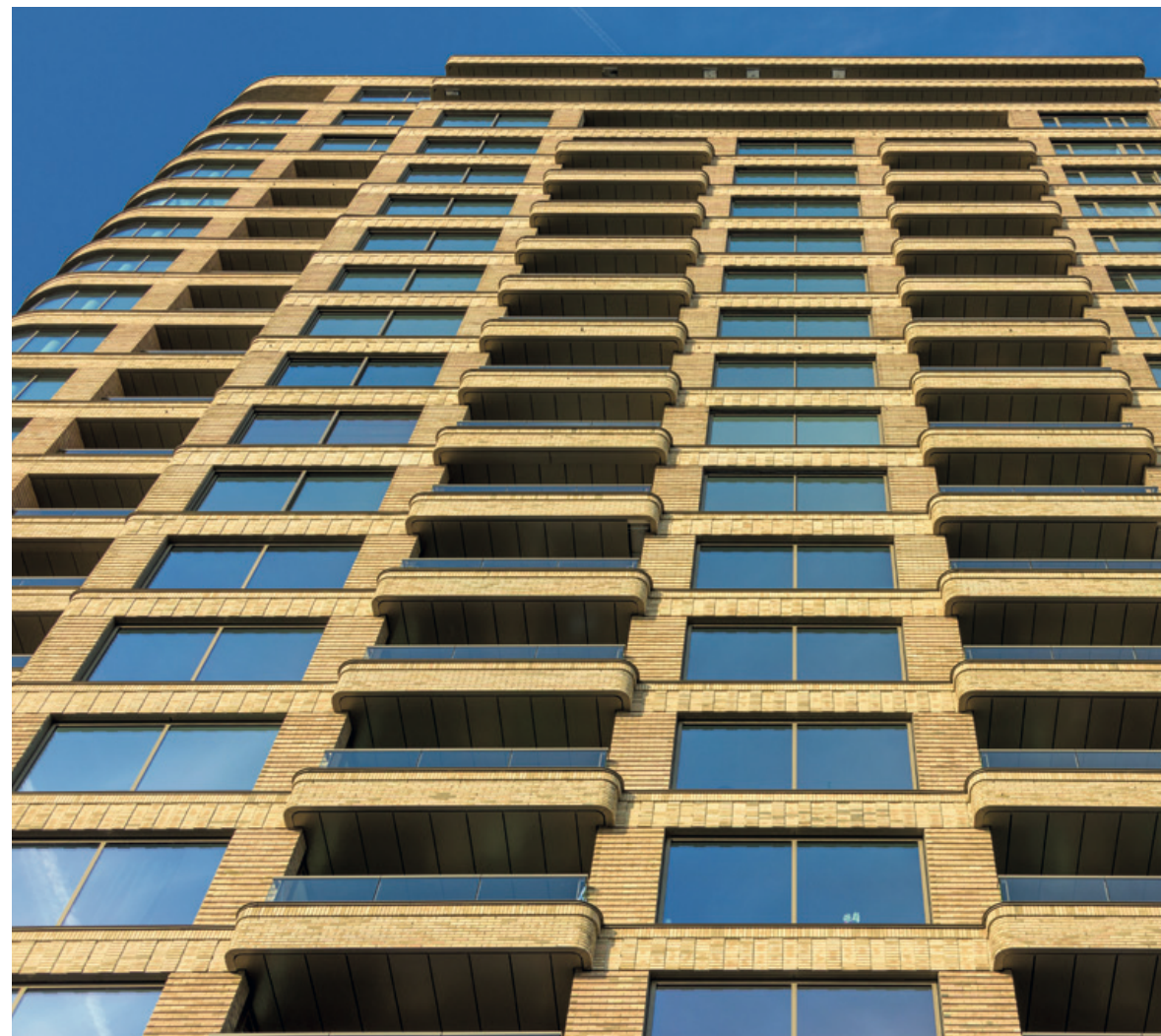
PRODUCTS ONLY AVAILABLE IN EUROPE
AND *BENELUX AND GERMANY

Photographer

Dirk Verwoerd

STATE AMSTERDAM

Amsterdam, Netherlands



VISION

STATE is an iconic new luxury apartment building whose triangular shape and pointed façade take inspiration from the world-famous Flatiron Building in New York. Our goal was to provide a high-performing flexible window system to accommodate its striking panoramic views and also deliver fall through protection.

TRANSFORMATION

Kawneer's RT 72 Reflex windows achieved a clean, modern aesthetic to complement the neo-Renaissance style. Almost spanning from floor to ceiling, they offer panoramic views and enhance thermal performance, with the installation of fall through protection to ensure that residents feel completely safe and secure.

REALISATION

Optimising natural daylight and beautiful views across the skyline and River Amstel, our rounded feature windows add to the energy efficiency, luxurious comfort and refined brick façade of this striking 22-storey, 70m high landmark, situated next to one of Amsterdam's newest hotspots, the Amstelkwartier.

Location: Amsterdam, Netherlands

Client: Facédo

Architect: ZZDP

Date: 2019

Product Used

RT 72 Reflex

 PRODUCT ONLY AVAILABLE
IN BENELUX AND GERMANY

Photographer

Dirk Verwoerd

HAVENLOFTS

Rotterdam,
Netherlands



VISION

Havenlofts Nassauhaven is a unique floating quarter of innovative, sustainable homes designed to be energy neutral. Regenerating a disused harbour basin, this pioneering city development on the tidal waters of Rotterdam must be resilient against a rising sea level caused by climate change.

TRANSFORMATION

The 18 lofts are embellished with durable aluminium frames and maintenance-free wooden panels. Kawneer RT 72 Reflex doors and windows were specially selected for the sustainability, robustness and aesthetic character they provide to the green-minded project's kerb appeal of living on the water.

REALISATION

Complementing the wooden façade with aluminium frames adds to the eco-friendly nature of these beautiful building shells, which can be personalised to the individual style of prospective loft owners. We're proud to have contributed to a new form of housing that we will likely see more of in the future.

Product Used

RT 72 Reflex



PRODUCT ONLY AVAILABLE
IN BENELUX AND GERMANY

Location: Rotterdam, Netherlands

Client: Rollecate

Architect: Public Domain Architects

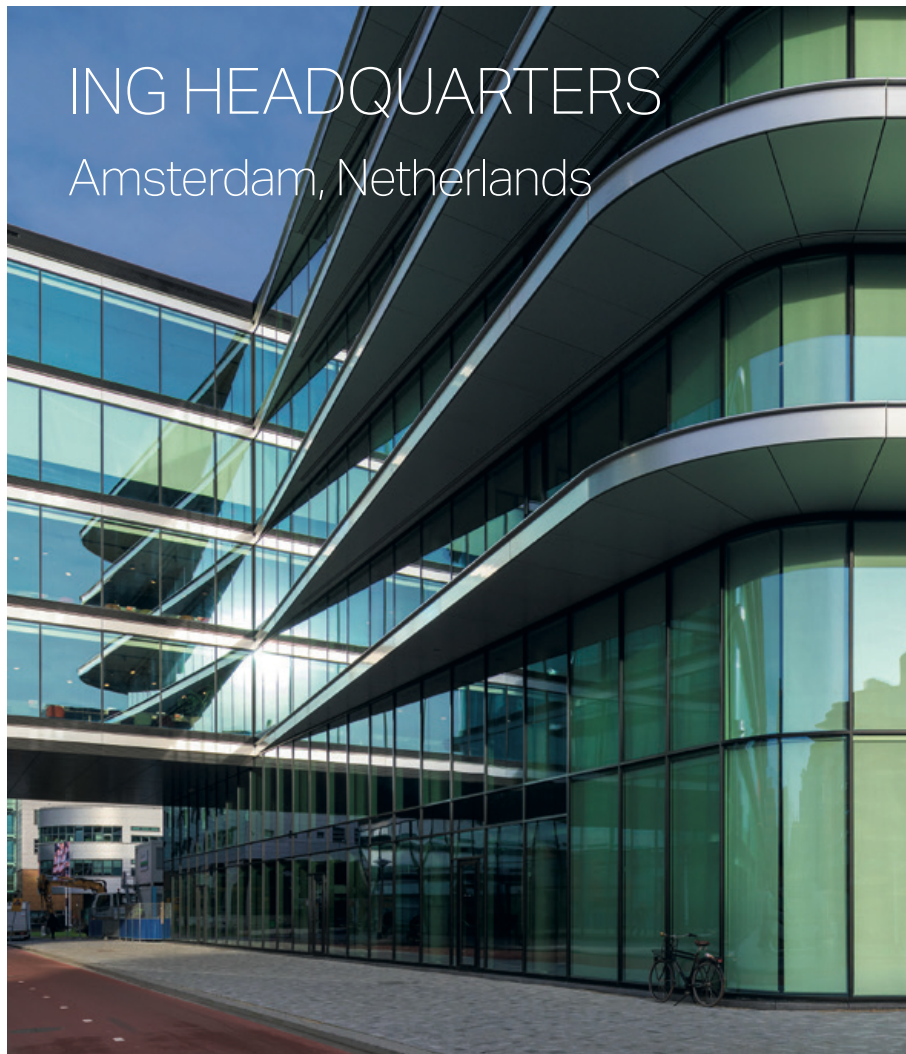
Date: 2020

Photographer

Dirk Verwoerd

ING HEADQUARTERS

Amsterdam, Netherlands



VISION

For Cedar, ING's new corporate head office at Cumulus Park, sustainability was key. Reducing the consumption of natural resources as much as possible, the inspiring space is partially built with concrete from the previous building and forms a central part of Amsterdam's innovation district.

TRANSFORMATION

To maximise energy performance and transparency, we recommended a triple glass system, combined with small, insulated window frames. A flat clamping strip gives the frames a slimmer appearance, which also feature special sills for an easy, yet wind resistant and watertight mounting.

REALISATION

With nearly all walls made of glass, we have helped create an open and transparent workspace for 2,800 employees spread over 39,000m² that encourages collaboration and innovation. Embodying every aspiration of ING, the Cedar building has been awarded the highest sustainability rating by BREEAM-NL.



Location: Amsterdam, Netherlands

Client: Rollecate

Architect: Benthem Crouwel

Date: 2019

Product Used

AA®100 Curtain Wall



PRODUCTS ONLY
AVAILABLE IN EUROPE

Photographer

Dirk Verwoerd

CIRCL

Amsterdam,
Netherlands



VISION

A new pavilion in Amsterdam's Zuidas district, CIRCL was designed and constructed according to sustainable and circular principles. Energy efficient and easy to disassemble, many of the raw materials are recycled and can be put to different uses in the future, including the aluminium envelope.

TRANSFORMATION

To make as little impact as possible, the façades are made from recycled aluminium using the Kawneer AR 100 recycle programme. Featuring curtain walls with dry joints, the folding modular system provides a feeling of light and space, together with a good insulation value.

REALISATION

As well as being robust, detachable and energy saving, our system helps form the living lab of CIRCL – a bright, open, comfortable, safe and inspiring circular environment with many possibilities, in which people can find the space they need to learn and grow together.



Product Used

AA®100 HI+ Curtain Wall



PRODUCTS ONLY
AVAILABLE IN EUROPE



Location: Amsterdam, Netherlands

Client: De Groot en Visser

Architect: De Architekten Cie

Date: 2018

Photographer

Dirk Verwoerd